

CASIO® DT-930

Rugged and lightweight
entry level scanning terminal.
Ideal for retail stocktaking
and warehouse applications



CASIO® DT-930

Lightweight, rugged entry level scanning terminal

- **High performance laser scanner**
- **Rugged design** with IP54 water/dust resistance and drop tested from 1.8 metres to concrete
- **Long battery life** - up to 200 hours use with 2 x AA alkaline batteries
- **Integrated Bluetooth™ and IrDA for wireless communications**
- **Large backlit keys and clear LCD display for ease of use**
- **Large memory** (4MB RAM, 16MB F-ROM)
- **SDK with device emulator integrates into eMbedded Visual C++ 4.0**

High performance laser scanner

The DT-930 features a built-in high speed (100 scans per second) laser scanner with the latest decoder capable of reading all industry standard 1D barcode symbologies. Its high resolution (0.127 mm) and improved scanning distance (450mm maximum) ensure accurate barcode reading. In addition, a scan width control (laser beam swing angle control) function is included to prevent the misreading of adjacent bar codes. For scan confirmation, a large green LED, vibrator, beep or any combination of these can be selected according to your working environment. Two models are available to suit different applications. The DT-930M50E has a downward scanning angle, ideal for scanning boxes and for fashion retail. The DT-930M51E has a straight scanning angle, ideal for standard retail stocktaking.

DT-930M51E -
straight angle scanner



DT-930M50E -
downward angle scanner



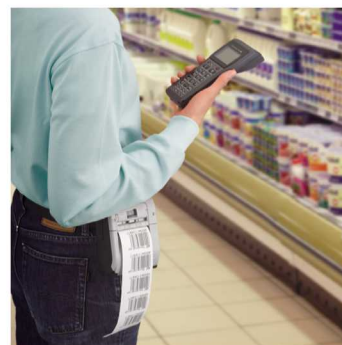
Robust and durable

The DT-930 is designed and built to withstand harsh working environments. It is drop tested from 1.8 metres in height to a concrete floor and is IP54 rated for dust and water-splash protection. The DT-930 can also operate in severe temperatures within the range -20° to 50°C.



Integrated Bluetooth™ for wireless printing

The latest version of Bluetooth is integrated as standard to allow wireless communications with portable Bluetooth label printers, greatly improving efficiency and flexibility. For example, you can print shelf edge labels on a belt printer right in front of a shelf in store.



Improved ease of use and visibility

The DT-930 is a lightweight scanner, weighing under 225 grams. Its ergonomic design means it can be comfortably operated for an entire shift, increasing productivity. The large, durable plastic keys have a responsive click touch, enabling error-free key operations even when the user is wearing gloves. For easy operation in dark environments, the keypad is backlit. The bright LCD display utilises a phase compensation film to provide maximum contrast and a wide viewing angle, improving visibility. In addition the large LED in the centre of the terminal can be programmed to light up green, blue or red to indicate different events. All these features help to ensure comfortable use for long periods even in environments with low visibility such as warehouses and retail stock rooms.

Long battery life



The DT-930 has an exceptionally long period of continuous operation (approx. 200 hours with two AA-size alkaline batteries), thanks to its power-saving design and effective power-management. This means you don't have the hassle

of charging the unit frequently during operation. Users also have a choice of batteries: two AA-size alkaline batteries or a rechargeable lithium-ion battery.



Large memory

In addition to 4MB of RAM, the DT-930 has a 16 MB (12.5 MB user area) F-ROM storage area which can be used for the backup of applications and data. This prevents the loss of data if the user allows the battery to completely run down.

SDK with device emulator

The DT-930 SDK integrates into Microsoft embedded Visual C++ 4.0. It includes a DT-930 emulator which supports debugging from within the development environment.

DT-930 - General Information



DT-930 - Specifications

CPU	SH1 (32-bit RISC type)		
Memory			
RAM	4 MB (User area: Approx. 1.6 MB)		
F-ROM	16 MB (User area: Approx. 12.5 MB)		
Display			
Type	Monochrome FSTN LCD		
Resolution	128 x 64 dots		
Font size	6, 8, 10 dots		
No. of display characters	210 in 6-dot mode (6x6 dots per font) 105 in 6-dot mode (6x12 dots per font) 128 in 8-dot mode (8x8 dots per font) 64 in 8-dot mode (8x16 dots per font) 72 in 10-dot mode (10x10 dots per font) 36 in 10-dot mode (10x20 dots per font)		
Backlight	LED		
Indicator	3-colour (blue, green, red) LED		
Input			
Keyboard	Numeric (Alphabet) keys, CLR key, BS key, S key, Multi-function (L/R) keys, F1 to F8 keys, Power key		
Trigger	2 (on left and right sides)		
Laser scanner			
Type	Semi-conductor laser light		
Number of scans	100 per second		
Resolution	0.127mm		
Readable distance	DT-930M50E (Angled type) 0 to 400mm	DT-930M51E (Straight type) 0 to 450mm	
Readable width	60 to 360 mm (at max. distance)	60 to 360 mm (at max. distance)	
Readable 1D symbologies	EAN8, EAN13, UPC-A/E, CODABAR, CODE39, CODE93, CODE128/EAN128, ITF, MSI, IATA, Industrial 2 of 5		
Interface			
Bluetooth™	Bluetooth Version 1.2 compatible		
Infrared	IrDA 1.1 compatible (Maximum: 4 Mbps, up to 20cm)		

Buzzer	Sound volume	75 dB or greater
Vibrator		Standard
Power		
Operation	AA-size alkaline battery (2 pcs) or DT-923LIB lithium-ion battery pack	
Battery capacity	540 mAh (DT-923LIB)	
Memory backup	Lithium battery (CR2032)	
Operating period	With AA-size batteries: Approx. 200 hours *	
	* Under conditions of scanning twice per 10 seconds and at room temperature	
Memory backup period	With only memory backup battery: 1 month *	
	* Backed up with only memory backup battery and at room temperature	
Environment		
Operating temp.	-20°C to +50°C	
Storage temp.	-20°C to +70°C	
Operating humidity	10% to 80%RH (no condensation)	
Storage humidity	5% to 90%RH (no condensation)	
Dust/ water proof	IP54 level (compliant with IEC60529)	
Drop durability	From 1.8 metres in height onto concrete	
Dimensions and weight		
Dimensions	DT-930M50E: Approx. 57.4 (69.0 *) W x 180.0 H x 21.9 (40.2 **) D mm DT-930M51E: Approx. 57.4 (69.0 *) W x 173.0 H x 21.9 (31.6 **) D mm * : Width at screen end ** : Depth at laser scanner end	
Weight	DT-930M50E: Approx. 225 g (Weight with 2 x AA Alkaline batteries) DT-930M51E: Approx. 210 g	
Application dev. tool	Hitachi SH-C Compiler, SDK for eVC ++4.0"	
Compliance		
Safety	EN60950 (UL60950 compatible)	
EMI, EMC	EN55022/EN55024 (FCC Part 15B compatible)	
Bluetooth type	EN300328/EN301489 (FCC Part 15C, RSS-210 compatible) Bluetooth logo certification	
Laser	EN60825 (FDA compatible)	

1. Bluetooth is a trademark owned by Bluetooth SIG, Inc. USA and has been used in accordance with a license acquired by CASIO.
2. Specifications in the table above are current as of June 2006 and may change without any advance notice.