

IN-COUNTER SCANNER

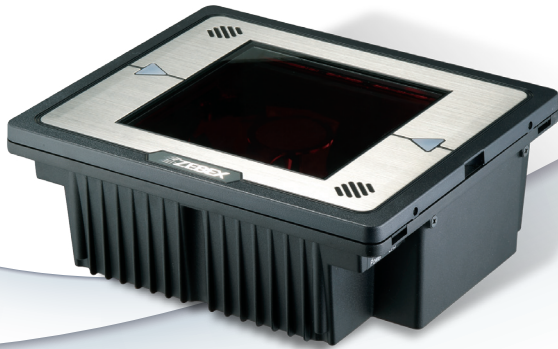
- Product availability and specifications depend on territory market strategy; all are subjects to change without prior notice.
- ZEBEX is the trademark of ZEBEX INDUSTRIES INC, all rights reserved.

Z-6180

Advanced Dual-Laser Omidirectional In-Counter Scanner

As the most advanced model among ZEBEX barcode scanner products, the Z-6180 represents the flagship of its brand for both vertical and horizontal in-counter applications. With its dual-laser technology, the scanner scans in 10 directions with 40 scan lines at a rate of 3,600 scans per second. Coupled with ZEBEX proprietary Z-SCAN+ hardware decoding technology, the Z-6180 delivers superb scanning performance for high traffic retail environment.

- Unique dual-laser technology & barcode stitching capability
- Field-replaceable scratch-resistant window
- Instant "two-way object-fly-by" scan reaction
- Honored by **red dot design award 2010**



reddot design award
winner 2010



COMPUTEX TAIPEI
design & innovation awards 2009



金點設計標章



1. Built-in EAS antenna
2. Large window & sharp LED indicator
3. Multi-interface support



OPERATIONAL

Light Source	Dual 650 nm visible laser diodes (VLD)
Depth of Field	6 mil: 0 – 50 mm
	7.5 mil: 0 – 100 mm
	10 mil: 0 – 130 mm
	13 mil: 0 – 180 mm
	20 mil: 0 – 250 mm
Scan Line	40
Scan Rate	3,600 scans per second
Scan Pattern	10 directions of scan field
Print Contrast	40% @ UPC/EAN 100%
Indicator	Two-color LED (blue & red)
Beeper Operation	Programmable tone & beep time
System Interface	IBM 46xx, keyboard, OEM (IBM) USB, RS-232, HID USB, USB Virtual COM

PHYSICAL

Dimension	285.0 × 242.0 × 101.2 mm
Weight	3,000 g

POWER

Power Supply Voltage	100 – 240 VAC, 50/60 Hz
DC Input Scanner	+12V, -12V, +5V

REGULATORY

Laser Class	CDRH Class IIa; IEC 60825-1: Class 1
EMC	CE & FCC DOC compliance

ENVIRONMENTAL

Operating Temperature	0°C – 40°C (32°F – 104°F)
Storage Temperature	-20°C – 60°C (-4°F – 140°F)
Humidity	5% – 95% RH (non-condensing)
Light Level	Max. 4,000 Lux (fluorescence)
Drop Durability	Designed to withstand 1M drops
Compatibility	EAS compatible

DECODING CAPABILITY

1D Barcode	UPC/EAN/JAN, UPC-A & UPC-E, EAN-8 & EAN-13, JAN-8 & JAN-13, ISBN/ISSN, Code 39, Codabar, Code 128 & EAN 128, Code 93, ITF 2 of 5, IATA Code, MSI, China Postal Code, Code 32, Industrial 2 of 5, Standard 2 of 5, JAP, Code 11, GS1 DataBar, GS1 DataBar Limited, GS1 DataBar Expanded
------------	--

